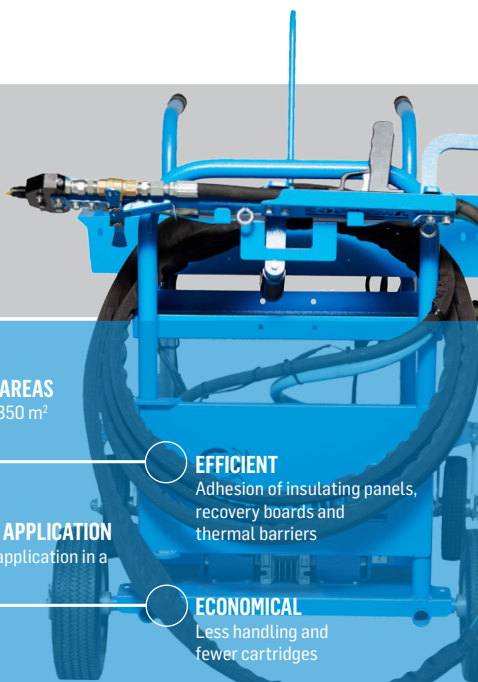


# GUIDE FOR THE DUOTACK® APPLICATOR

INSTALLATION, OPERATION AND STORAGE  
OF THE DUOTACK APPLICATOR



## IDEAL FOR LARGE AREAS

Coverage of 230 to 350 m<sup>2</sup>  
(2,500 to 3,800 ft<sup>2</sup>)

## FAST AND EASY APPLICATION

Clean and quick application in a  
single step

## EFFICIENT

Adhesion of insulating panels,  
recovery boards and  
thermal barriers

## ECONOMICAL

Less handling and  
fewer cartridges

Product code	Description
<b>DUOTACK CUBITAINERS</b>	
30132	DUOTACK CUBITAINER – Part A – 18.9 L (5 US gal)
30133	DUOTACK CUBITAINER – Part B – 18.9 L (5 US gal)
30162	DUOTACK NEO CUBITAINER – Part A – 18.9 L (5 US gal)
30163	DUOTACK NEO CUBITAINER – Part B – 18.9 L (5 US gal)
30235	DUOTACK 365 CUBITAINER – Part A – 18.9 L (5 US gal)
30236	DUOTACK 365 CUBITAINER – Part B – 18.9 L (5 US gal)
AD02	BLACK quick connector for CUBITAINERS – Part A
AD03	GREY quick connector for CUBITAINERS – Part B
26382	BLACK quick connector for DUOTACK applicator – Part A – 18.9 L (5 US gal)
26381	GREY quick connector for DUOTACK applicator – Part B – 18.9 L (5 US gal)
CA34	Static mixer
21279	DUOTACK applicator
21999	Cleaning solution for DUOTACK applicator – 18.9 L (5 gal US) – Kit A and B (2 x 3.78 L [1 US gal])

Protect your hands with gloves when handling the DUOTACK applicator.

## DUOTACK APPLICATOR AND ITS COMPONENTS

### PRODUCTS



DUOTACK CUBITAINERS  
Part A and B - 19.5 L (5 US gal)



QUICK CONNECTORS  
Part A

QUICK CONNECTORS  
Part B



STATIC MIXER



CLEANING SOLUTIONS  
Part 1 and 2 - 3.78 L (1 US gal)



TOOLS  
and GREASE TUBES



DUOTACK APPLICATOR



## RESTRICTIONS

DUOTACK and DUOTACK NEO adhesives in cubitainers **MUST NEVER BE STORED AT TEMPERATURES BELOW 0 °C (32 °F)**. Moreover, 24 hours before application and during application, the adhesive must be maintained at a minimum temperature of 20 °C (68 °F).

DUOTACK 365 adhesive in cubitainers **CAN BE APPLIED AND STORED WITHOUT TEMPERATURE RESTRICTIONS**. However, the adhesive should be kept at a minimum temperature of -10 °C (14 °F) before and during application.

## MACHINE PREPARATION

### Installation of DUOTACK cubitainers

Install the DUOTACK – Part A cubitainer into the receptacle of the DUOTACK – Part A applicator.

Puncture the cubitainer where indicated.

Remove the connector from the box and its packaging.

Repeat these steps for the DUOTACK – Part B cubitainer.

Install the BLACK connector on the cubitainer – Part A, and the GREY connector on the cubitainer – Part B.



## MACHINE PREPARATION

### Installation of DUOTACK cubitainers

Turn over the DUOTACK cubitainers on the locations indicated on the DUOTACK applicator.



### Lubrication of connectors

Lubricate connectors.



### Joining connectors

Connect the BLACK connector to the DUOTACK – Part A cubitainer.

Connect the GREY connector to the DUOTACK – Part B cubitainer.

Replace connectors when necessary.

**CAUTION: DO NOT INVERT CONNECTORS.**



## APPLICATION OF THE DUOTACK ADHESIVE

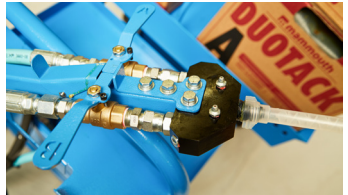
### Grease the threads of the manifold block

Apply grease to the threads of the manifold block before installing the static mixer.



### Installation of the static mixer

Screw the static mixer on the manifold block.



## CURING TIME

### DUOTACK adhesive

Curing time was determined under ideal application conditions, i.e., 25 °C (77 °F) and 50% relative humidity.

Curing time is longer at lower temperatures, and shorter at higher temperatures.

**Adjust your application technique according to the surrounding conditions.**

## START

### Starting the DUOTACK applicator

Plug the DUOTACK applicator into a 110 V electrical circuit of at least 15 A, or into a generator of 2,000 W.

**Do not use an extension cord.**

Turn ON the pump. The indicator light will turn green.

For a first use, wait approximately 90 seconds so that the hoses fill with DUOTACK.

## APPLICATION OF THE ADHESIVE

### Application of the DUOTACK adhesive

Activate levers A and B.

Press the trigger to apply the DUOTACK adhesive.

Move the machine as needed. Do not allow the hoses to touch the adhesive.



## TEMPORARY STOP

### Stanby (over 5 minutes)

Switch off levers A and B.

Turn OFF the pump.

Remove the static mixer.

Apply grease in lubrication holes A and B of the manifold block.

Press the trigger and completely drain the adhesive.

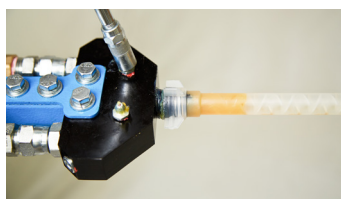
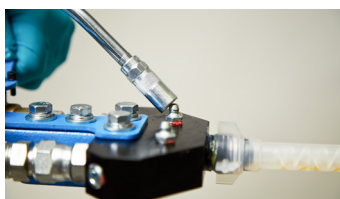
Apply grease on the threads of the manifold block.

Screw a new static mixer on the manifold block.

Apply grease in lubrication holes A and B of the manifold block.



Make sure there is a minimum of 25 mm (1 in) of grease inside the static mixer to prevent crystallization of the adhesive.



## CLEANING AND STORAGE

### Cleaning and storing the DUOTACK applicator

Remove the DUOTACK – Part A cubitainer.

Remove the DUOTACK – Part B cubitainer.

Pour the cleaning solution – Part 1 into the receptacle of the DUOTACK – Part A applicator.

Pour the cleaning solution – Part 2 into the receptacle of the DUOTACK – Part B applicator.

Connect the BLACK connector to the cleaning solution – Part A cubitainer.

Connect the GREY connector to the cleaning solution – Part B cubitainer.

Plug the DUOTACK applicator into a 110 V electrical circuit of at least 15 A, or into a generator of 2,000 W. Do not use an extension cord.

Turn ON the pump. The indicator light will turn green.

Activate levers A and B.

Press the trigger and COMPLETELY drain the adhesive hoses with the cleaning solution in disposable containers.

Follow the steps for temporary stop (standby for more than 5 minutes).

If necessary, replace the hoses.



### Long-term storing the DUOTACK applicator

During a long-term storage, apply grease in lubrication hole A of the pump.

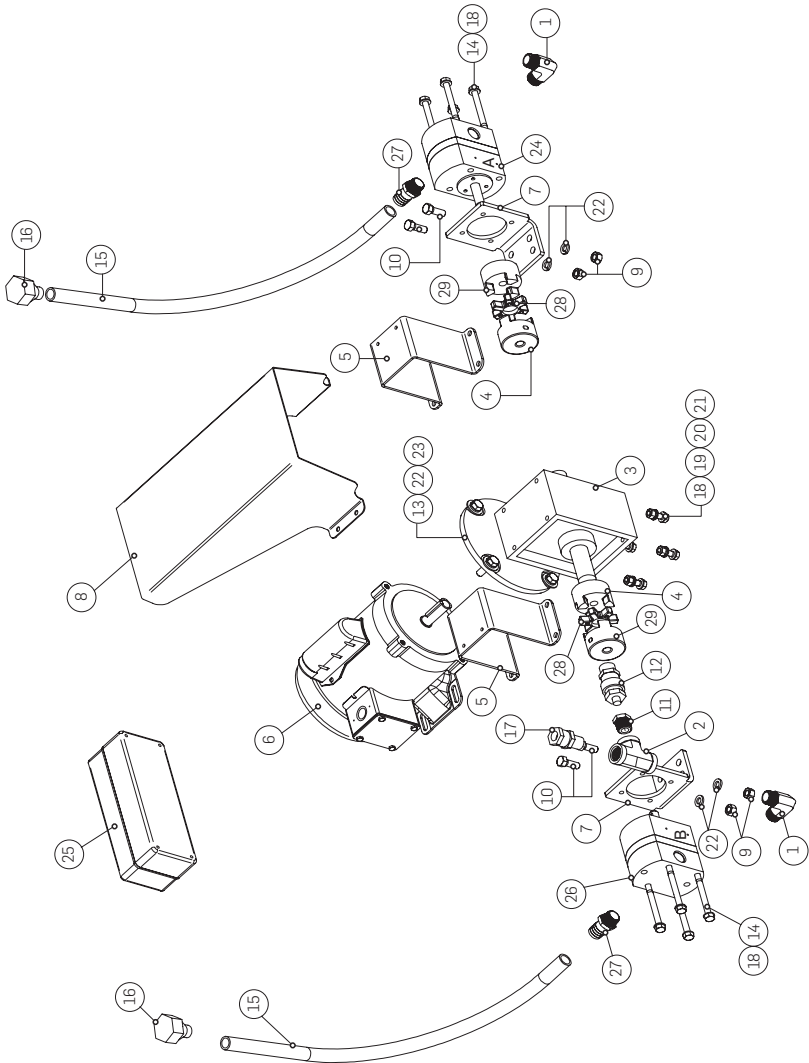


Code	# PIECE	DESCRIPTION	QTY
<b>MATERIAL LIST</b>			
1	FIT001	90 degree fitting	1
2	FIT002	Tee fitting	1
3	GRB001	Gearbox	1
4	COU001	Motor coupling hub	1
5	GRP001	Pump guard	1
6	COU002	Motor	2
7	BRA001	Motor guard	2
8	GRM001	Pump mount	2
9	-	Hex nut $\frac{3}{8}$	1
10	-	Hex screw $\frac{3}{8}$ x 1	1
11	FIT003	Hydraulic fitting	1
12	PRS001	Pressure switch	2
13	-	Washer $\frac{3}{8}$	1
14	-	Screw $\frac{5}{16}$ x 3.5	1
15	HOS001	Entrace hose	6
16	FIT004	Fitting (1 black - 1 blue)	1
17	FIT005	Hydraulic fitting	1
18	-	Washer $\frac{5}{16}$	1
19	-	Lock washer $\frac{5}{16}$	2
20	-	Hex screw $\frac{5}{16}$ x 1	1
21	-	Hex washer $\frac{5}{16}$	1
22	-	Lock washer $\frac{3}{8}$	1
23	-	Hex screw $\frac{3}{8}$ x 1 $\frac{1}{4}$	1
24	PUM001	Pump A	2
25	CTR001	Electric box	2
26	PUM002	Pump B	1
27	FIT006	Brass fitting	2
28	COU003	Transmission element	1
29	COU004	Pump coupling hub	1



# CLASSIFICATION

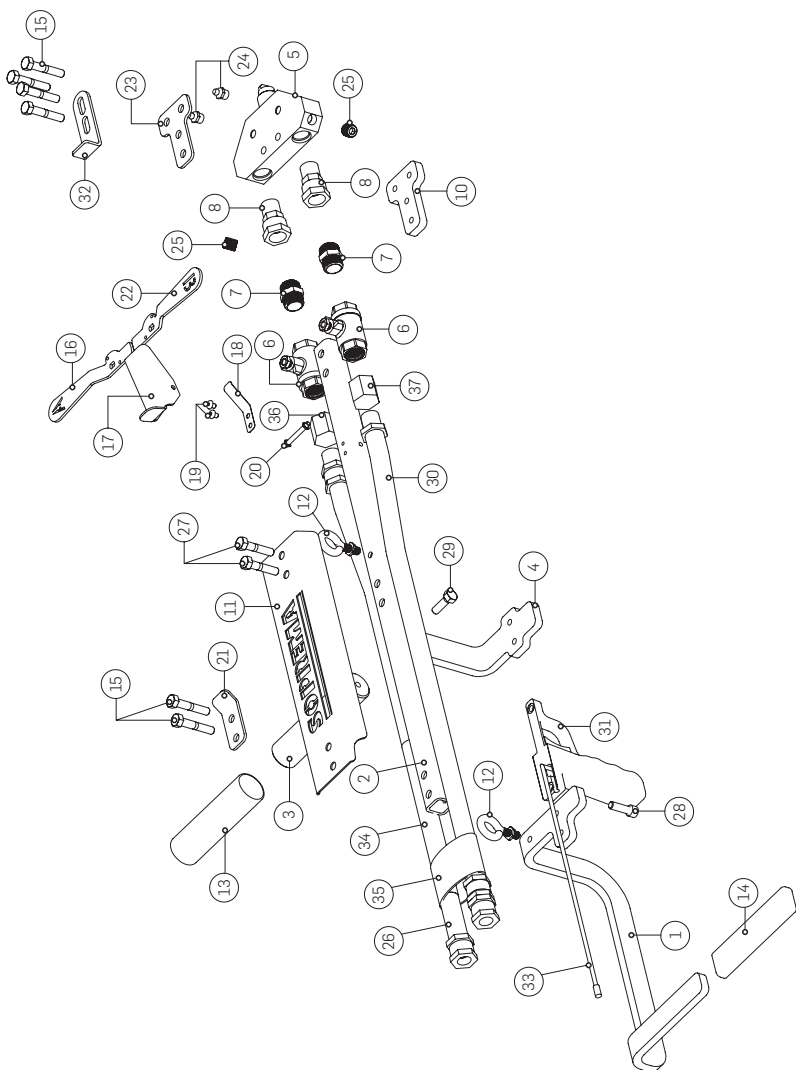
## Pieces of the DUOTACK applicator



Code	# PIECE	DESCRIPTION	QTY
<b>MATERIAL LIST</b>			
1	PTR001	Flat handle	1
2	PTR002	Tubing	1
3	PTR003	Round handle	1
4	PTR004	Bracket	1
5	NIP001	Nipple (manifold block)	1
6	VAL001	Ball valve	2
7	FIT007	Hydraulic fitting	2
8	FIT008	Hydraulic fitting	2
9	FIT009	Hydraulic fitting	1
10	PTR005	Union plate	1
11	PTR006	Cover	1
12	-	Eyebolts $\frac{5}{16}$	2
13	PTR007	Round handle grip	1
14	PTR008	Flat handle grip	1
15	-	Hex Screw $\frac{5}{16}$ x $1 \frac{3}{4}$ in	6
16	PTR009	Valve handle "A"	1
17	PTR010	Latch	1
18	PTR011	Spring	1
19	-	Button screw #10 x $\frac{1}{4}$ in	2
20	PTR012	Clevis pin	1
21	PTR013	Hook	1
22	PTR014	Valve handle "B"	1
23	PTR015	Superior mounting plate	1
24	-	Zerk	2
25	-	Fitting plug	2
26	PTR016	Assembled blue hose "A"	1
27	-	Hex screw $\frac{5}{16}$ x $1 \frac{1}{2}$ in	2
28	-	ALLEN screw $\frac{5}{16}$ x 1 in	1
29	-	Hex screw $\frac{5}{16}$ x 1 in	1
30	PTR017	Assembled blue hose "A"	1
31	33783SAM300	Assembled trigger	1
32	PTR018	Stop plate	1
33	PTR019	Wire control trigger	1
34	PTR020	Flexible cover	1
35	PTR021	Hose cover	1
36	FIT010	Hydraulic fitting	1
37	FIT011	Hydraulic fitting	1

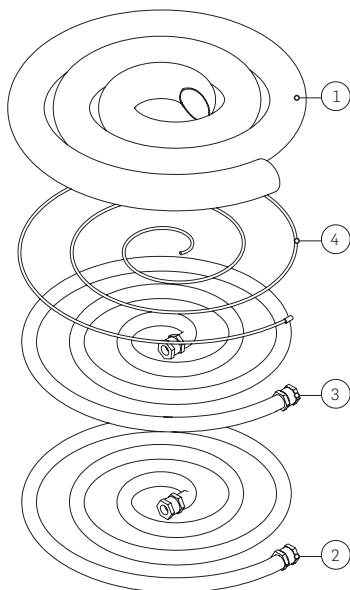
# CLASSIFICATION

## Pieces of the DUOTACK applicator



# CLASSIFICATION

## Pieces of the DUOTACK applicator



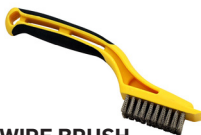
Code	# PIECE	DESCRIPTION	QTY
<b>MATERIAL LIST</b>			
1		Hose cover	1
2		Assembled black hose	1
3		Assembled blue hose	1
4		Wire control trigger	1

# TOOL KIT

## List



**TOOL BOX**



**WIRE BRUSH**



**MANIFOLD BLOCK**



**ALLAN KEY SET**



**VINYL HOSE**



**VICE GRIP**



**HOSE CLAMP**



**FLAT SCREWDRIVERS**



**GLOVES**



**LUBRICANT**



**CLEANER - PART1**



**GREASE**



**CLEANER - PART2**



**RAGS**



## INNOVATION SINCE 1908

---

SOPREMA has developed around the idea that the quality, durability and reliability of materials must match builders' ambitions and expectations. For more than 100 years, SOPREMA has been using its expertise to develop a variety of high-end products that meet or exceed all the requirements of the construction field.

**ROOFS WALLS FOUNDATIONS PARKING DECKS BRIDGES ADDITIONAL EXPERTISE**



WATERPROOFING



INSULATION



VEGETATIVE  
SOLUTIONS



SOUNDPROOFING



COMPLEMENTARY  
PRODUCTS

---

SOPREMA is an international manufacturer specializing in the production of waterproofing and insulation products, as well as vegetative and soundproofing solutions, for the building and civil engineering sectors.

---

SOPREMA.US • 1.800.356.3521

SOPREMA.CA • 1.877.MAMMOUTH

---